



P+L Systems™

# Flytrap Commercial™

## Commercial glueboard insect control

**Flytrap Commercial™** provides a hygienic solution to insect control for sensitive areas such as food preparation areas. Incorporating high specification components and build quality, **Flytrap Commercial™** is available as a 30, 40 or 80W unit and can be ceiling suspended, slimline wall or discreet wall mounted. **Flytrap Commercial™** is also available as an IP65 version, suitable for use in harsh environments which may require hosing down. All **Flytrap Commercial™** units are designed for use with genuine **GLUPAC™** pheromone impregnated glueboards, which incorporate UV stable dry glue for longer life and an increased catch.

### Features

#### Flexible and easy installation

Choice of ceiling suspended, slimline wall or discreet wall mounting

#### IP65 option for harsh environments

All stainless steel construction certified to IP65

#### Shatterproof tubes as standard \*

Teflon® FEP coated shatterproof tubes for hazardous and sensitive areas

#### High efficacy UV tubes

Proven to be more effective and longer lasting than standard UV tubes

#### Innovative glueboard technology

Designed for use with **GLUPAC™** pheromone impregnated glueboards with UV stabiliser

#### Robust construction

All metal construction

#### Independent certification

Independently tested and certified to RoHS and relevant European standards

#### Complete peace of mind

Three year guarantee (excluding tubes)

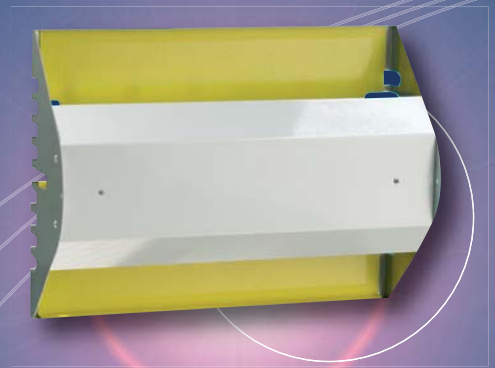
\* IP65 models only

### Specification

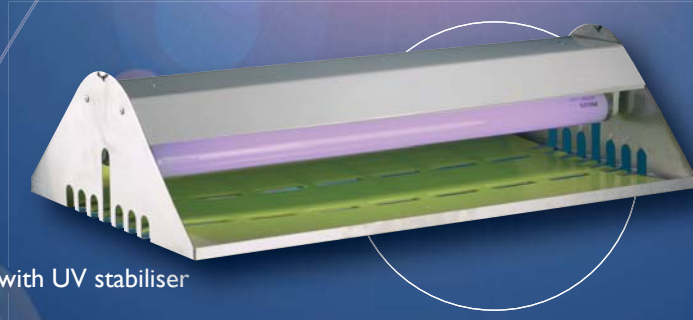
Part No.	Model	Dimensions(mm)	Coverage	Tubes	Weight
ZF002	FTC30	470x185x355	80m <sup>2</sup>	2x15W	4 Kg
ZF003	FTC40	623x185x355	120m <sup>2</sup>	2x20W	5 Kg
ZF038	FTC80	623x185x355	240m <sup>2</sup>	2x40W	5 Kg

#### IP65

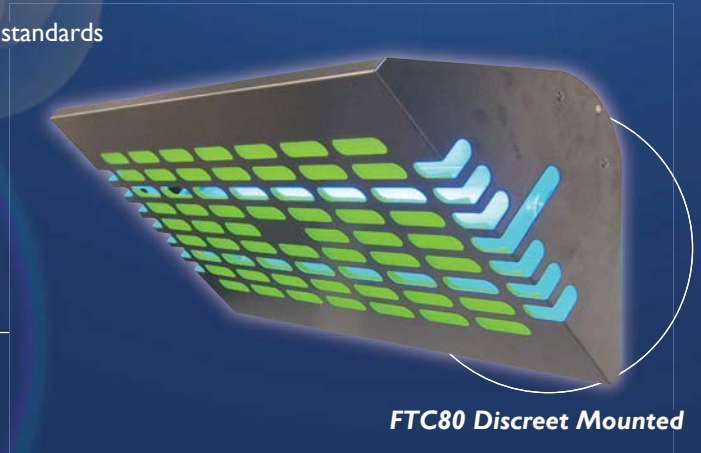
Part No.	Model	Dimensions(mm)	Coverage	Tubes	Weight
ZF021	FTC30 IP65	470x185x355	80m <sup>2</sup>	2x15W	4 Kg
ZF022	FTC40 IP65	623x185x355	120m <sup>2</sup>	2x20W	5 Kg
ZF023	FTC80 IP65	623x185x355	240m <sup>2</sup>	2x40W	5 Kg



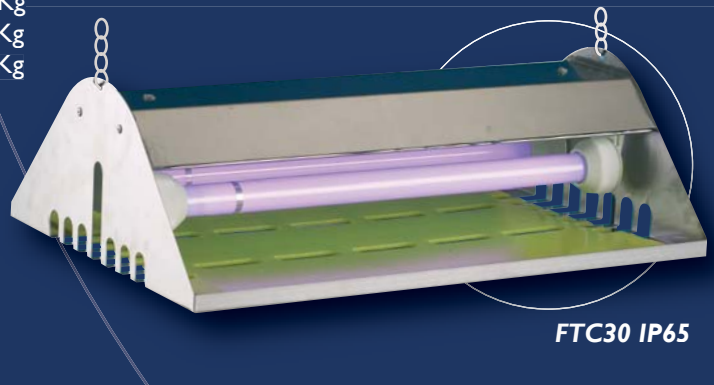
FTC30 Slimline Wall Mounted



FTC40 Ceiling Suspended



FTC80 Discreet Mounted



FTC30 IP65

#### GLUPAC™

Contemporary glueboard technology incorporating impregnated pheromones and UV stable dry glue.



P+L Systems™

**MUL-T-MAT**  
SUPPLY CO.

Phone: 905-738-3171  
Toll Free: (800) 567-MATS (6287)  
Fax: 905-738-8792  
www.mul-t-mat.com



INVESTOR IN PEOPLE

Information provided on this literature is modified and updated from time to time, it is not intended that you should rely on it or that it should form part of any contract. This is due to the constant redevelopment of our products.

P+L Systems Ltd

© 2008