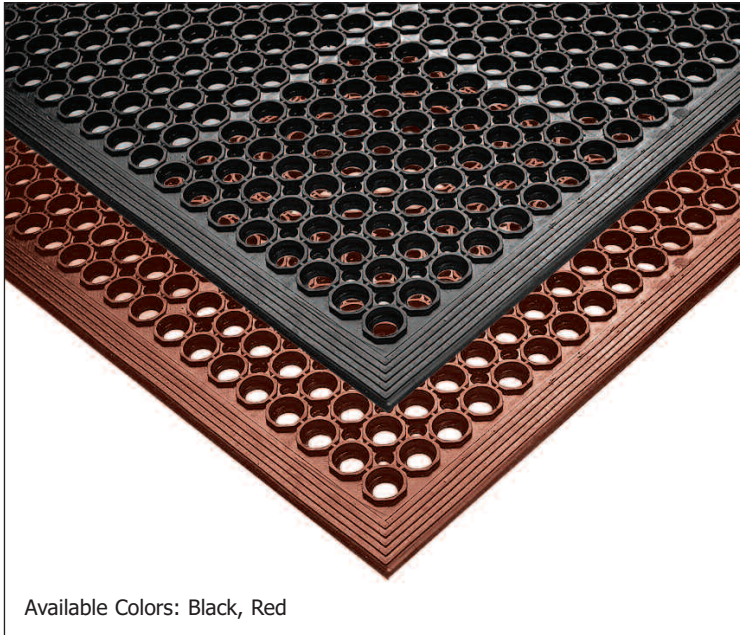




TEKNOR APEX
Under License To:
Superior Manufacturing Group

T30 Competitor® Safety/Anti-fatigue Matting



Available Colors: Black, Red

MUL-T-MAT
& SUPPLY CO.

Phone: 905-738-3171
Toll Free: (800) 567-MATS (6287)
Fax: 905-738-8792
www.mul-t-mat.com

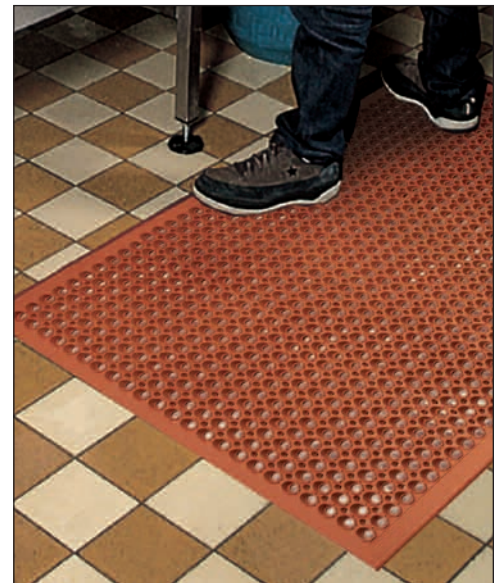
Competitor® is a cost effective lightweight anti-fatigue mat with molded-in beveled edges for a more workstation oriented environment. Available in general purpose (black) and heavy-duty (red) rubber compounds for varying degrees of grease and oil protection, Competitor® has a lightweight design making it perfect for applications where the mat is routinely moved for cleaning. A large hole drainage system facilitates the removal of liquids and debris from the work area and the molded-in beveled edges reduce trip hazards and allow for easy access onto and off of the mat.

Black

QUALITY METER	FAIR	GOOD	BETTER	BEST	ULTIMATE
grease resistance	██████████		██████████		
comfort	██████████		██████████		
drainage	██████████		██████████		
wearability	██████████		██████████		
traction	██████████		██████████		

Red

QUALITY METER	FAIR	GOOD	BETTER	BEST	ULTIMATE
grease resistance	██████████		██████████		
comfort	██████████		██████████		
drainage	██████████		██████████		
wearability	██████████		██████████		
traction	██████████		██████████		



Application Requirements:

Flexible configurations, some exposure to grease, oils & water, drainage and comfort, beveled edges for cart traffic, easy handling



Drainage



Anti-Slip



Anti-Fatigue



Food Service



Food Processing

- Available in general purpose (black) and heavy-duty (red) rubber compounds for varying degrees of grease and oil protection
- Lightweight for easy handling and cleaning
- Molded-in beveled edges to reduce trip hazards
- Drainage system removes liquid and debris from worker platform
- Low profile for easy cart access
- Overall thickness: 1/2"
- Stock Sizes: 3' x 3', 3' x 5'